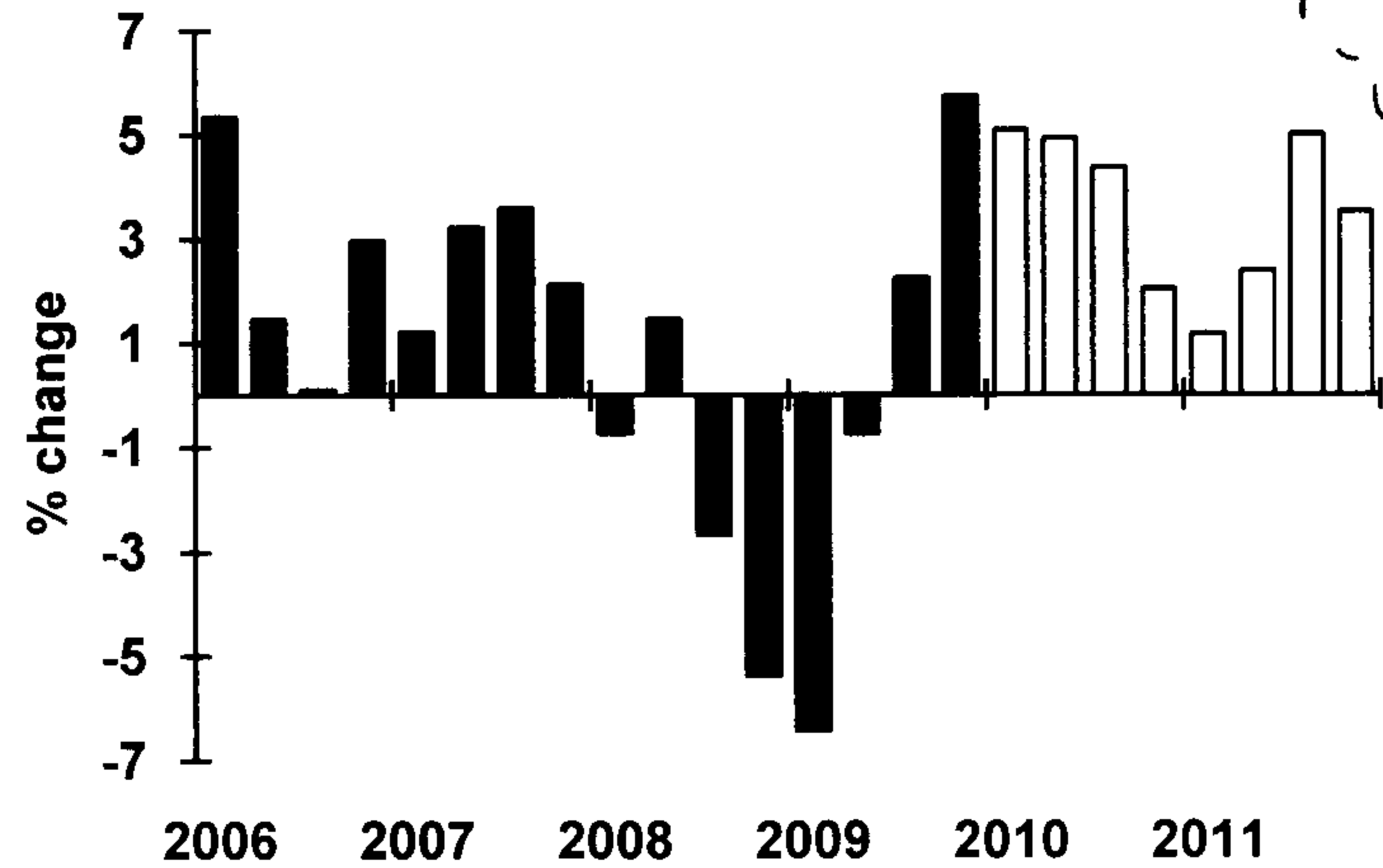
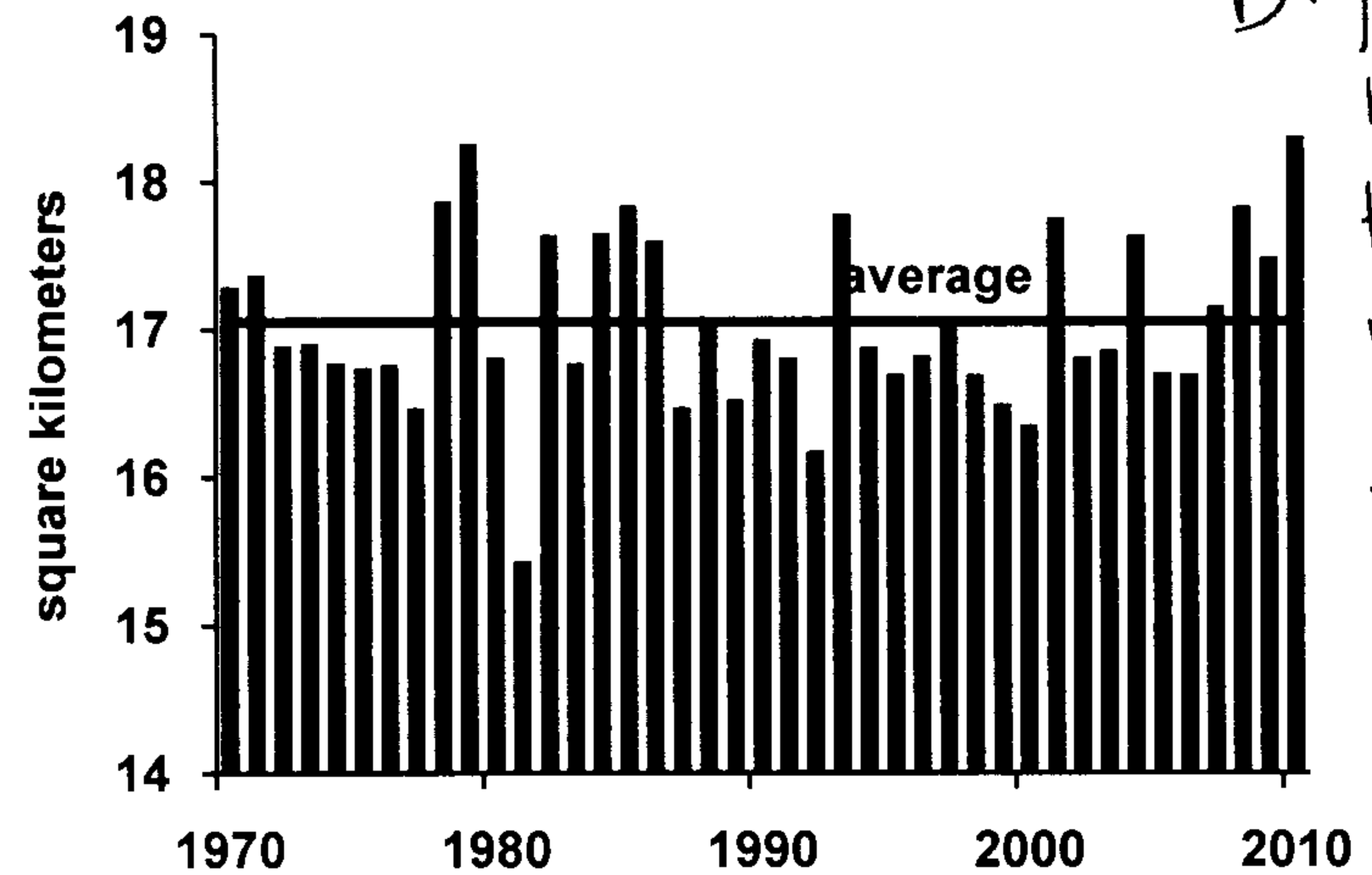


GDP Forecast
Inflation Adjusted



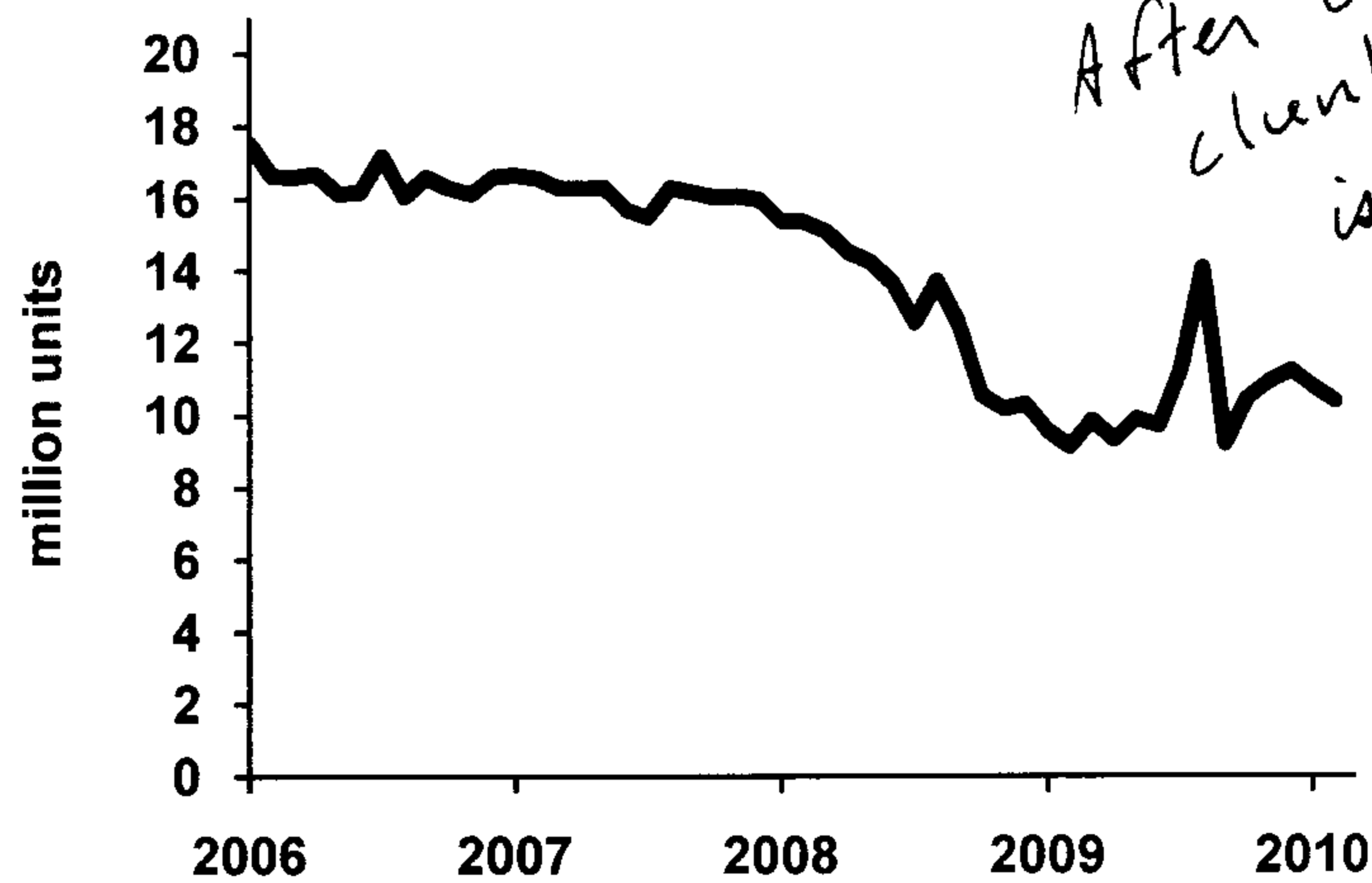
My forecast is conservative compared to past recoveries.

Winter Snow Coverage
North America



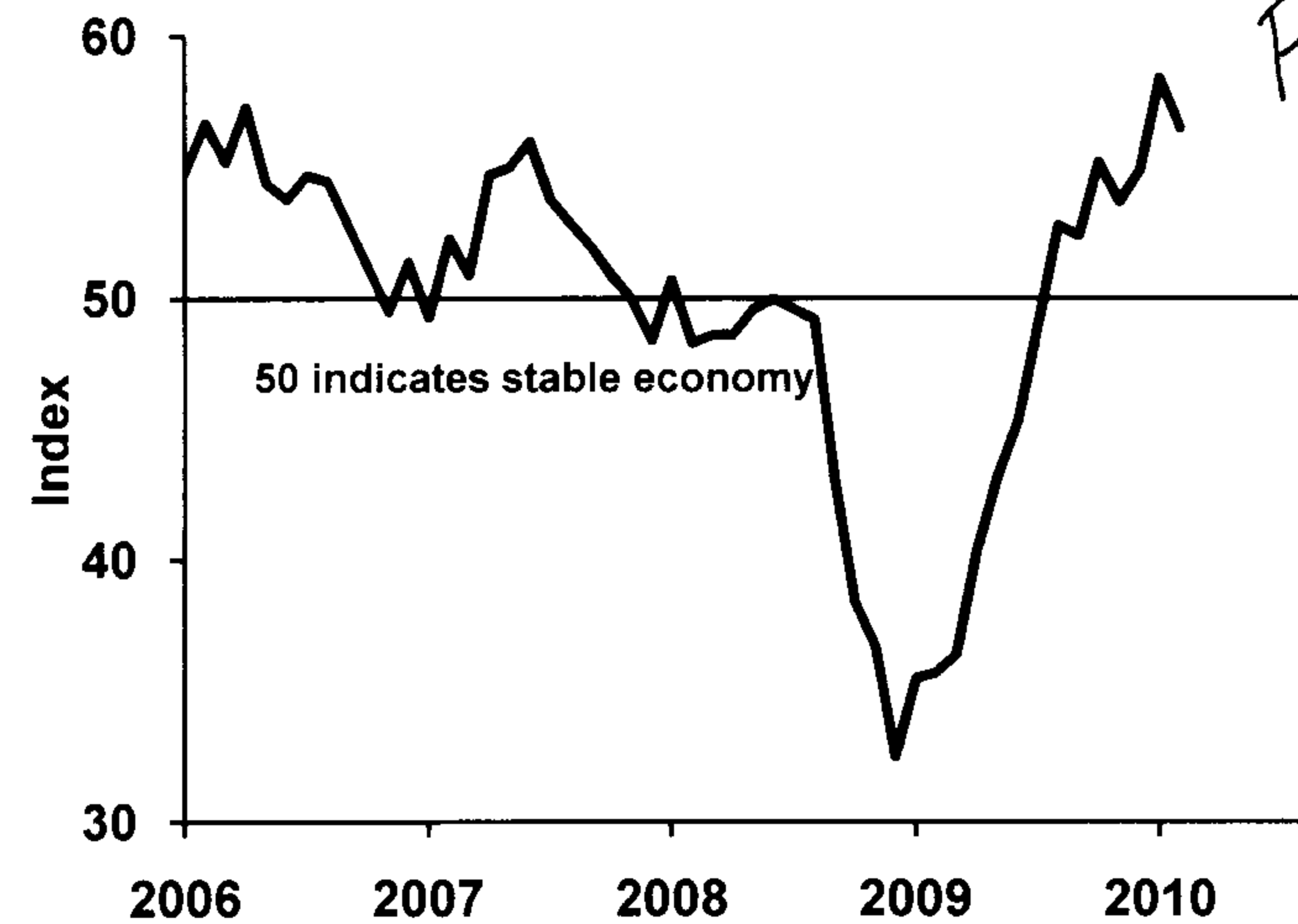
Big snow means a temporary hit to the economy.

Auto & Light Truck Sales



After cash-for-clunkers, normal is still weak.

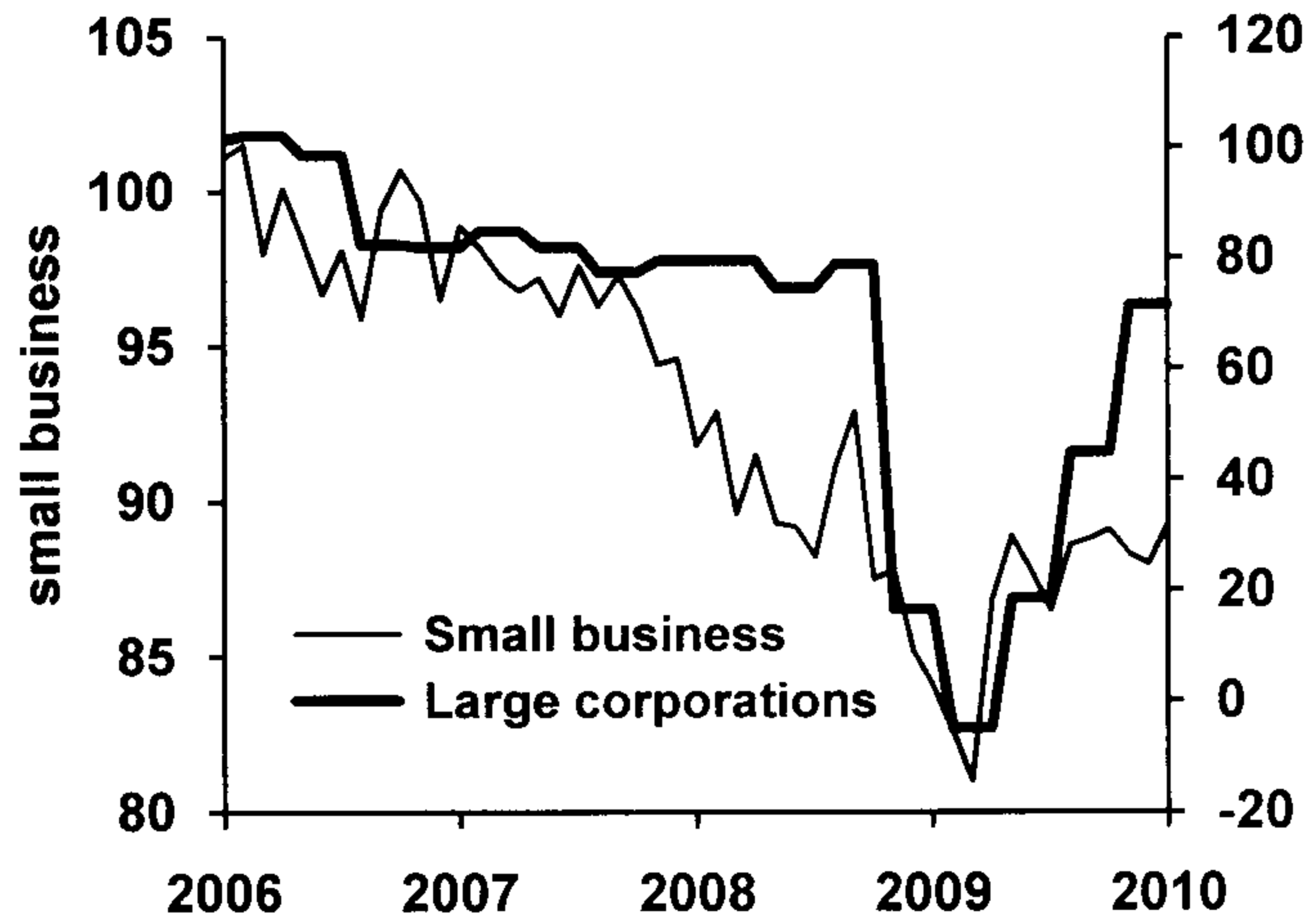
ISM Manufacturing Index
formerly Purchasing Managers Index



Factories spinning up!

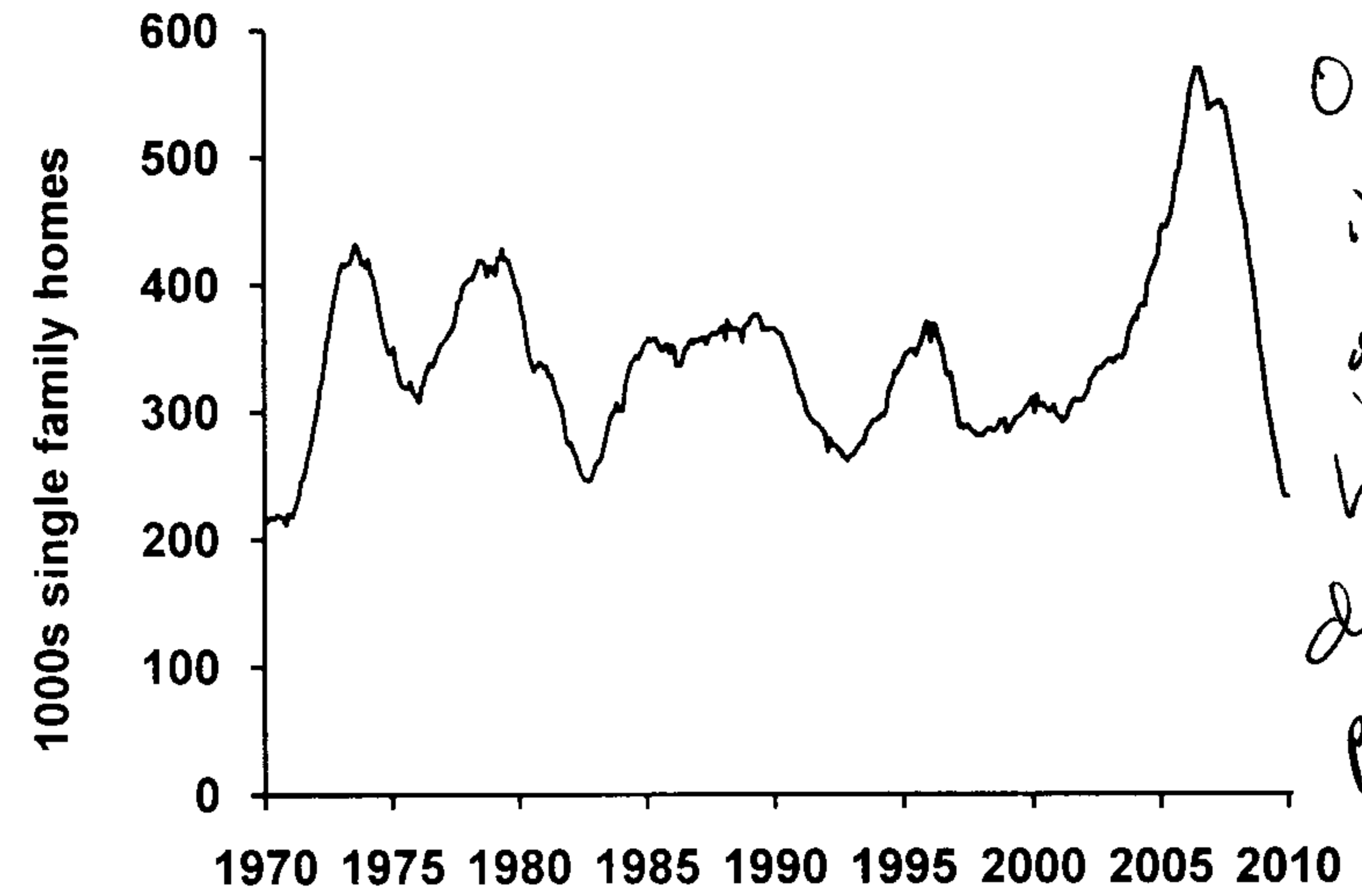
Business Confidence

sources: Business Rountable & NFIB



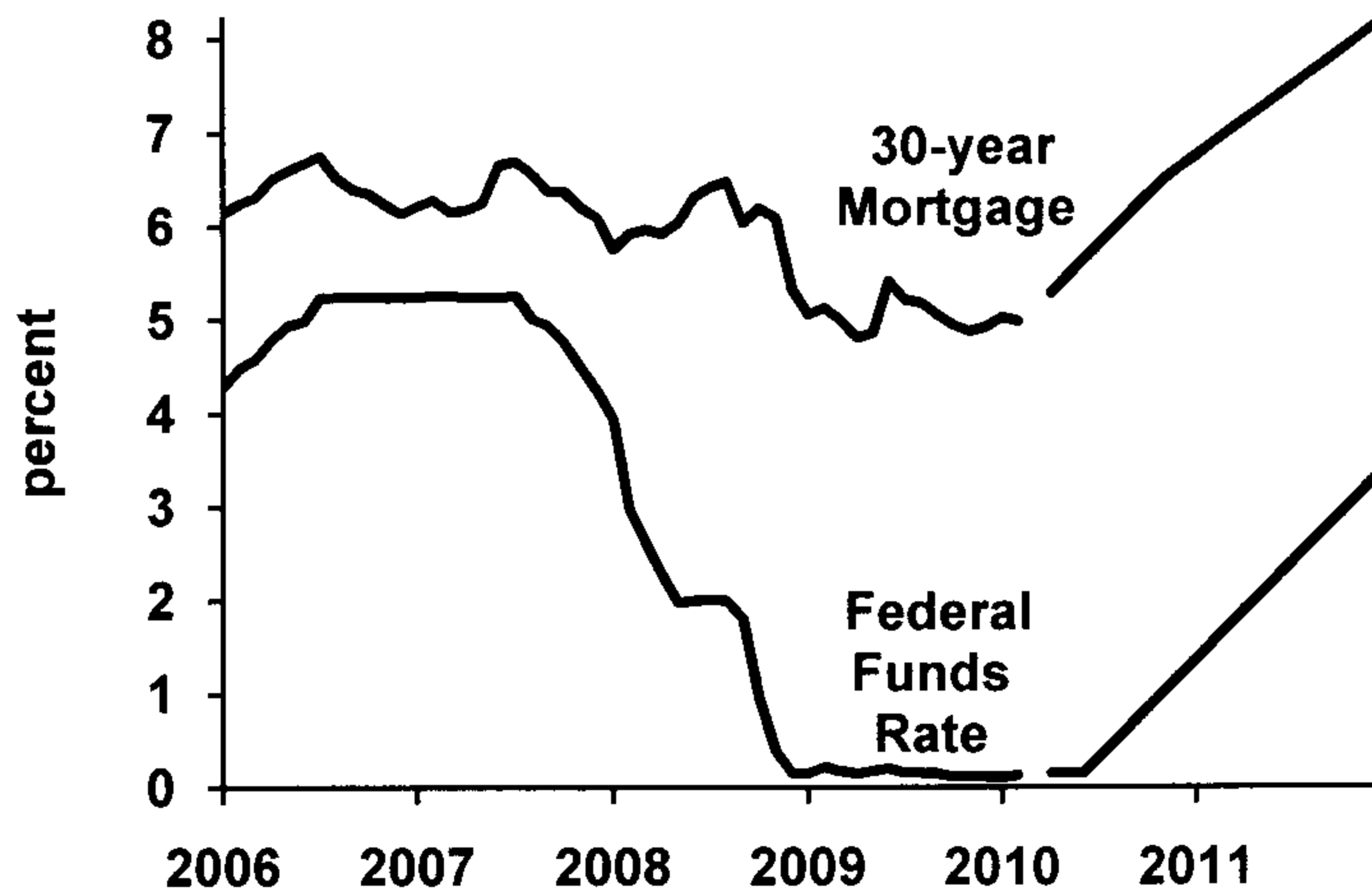
Your attitude is improving (mine, too)

New Homes For Sale



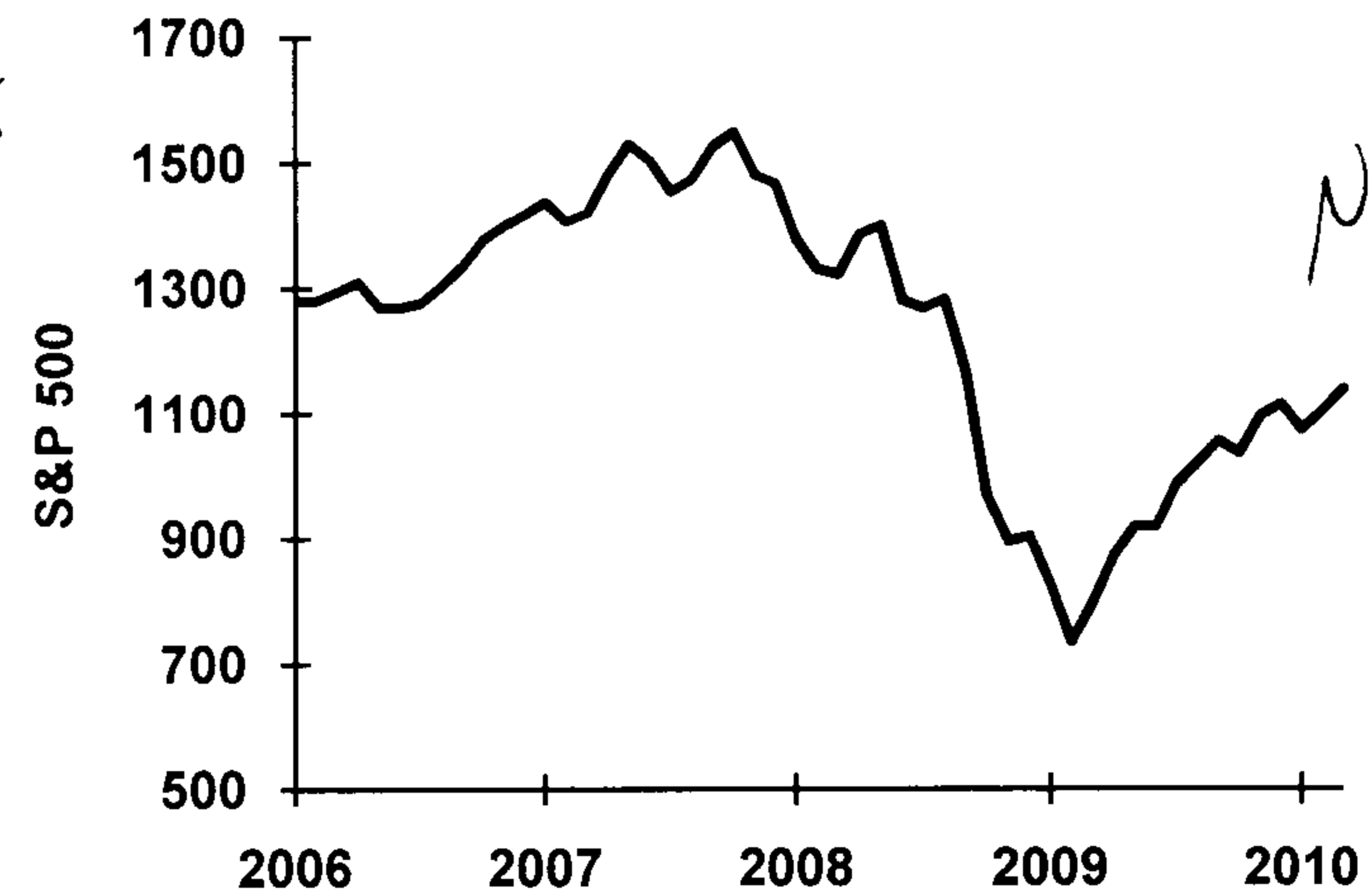
Official inventory of new homes is down, but plenty of others are in the "shadow" inventory.

Interest Rates



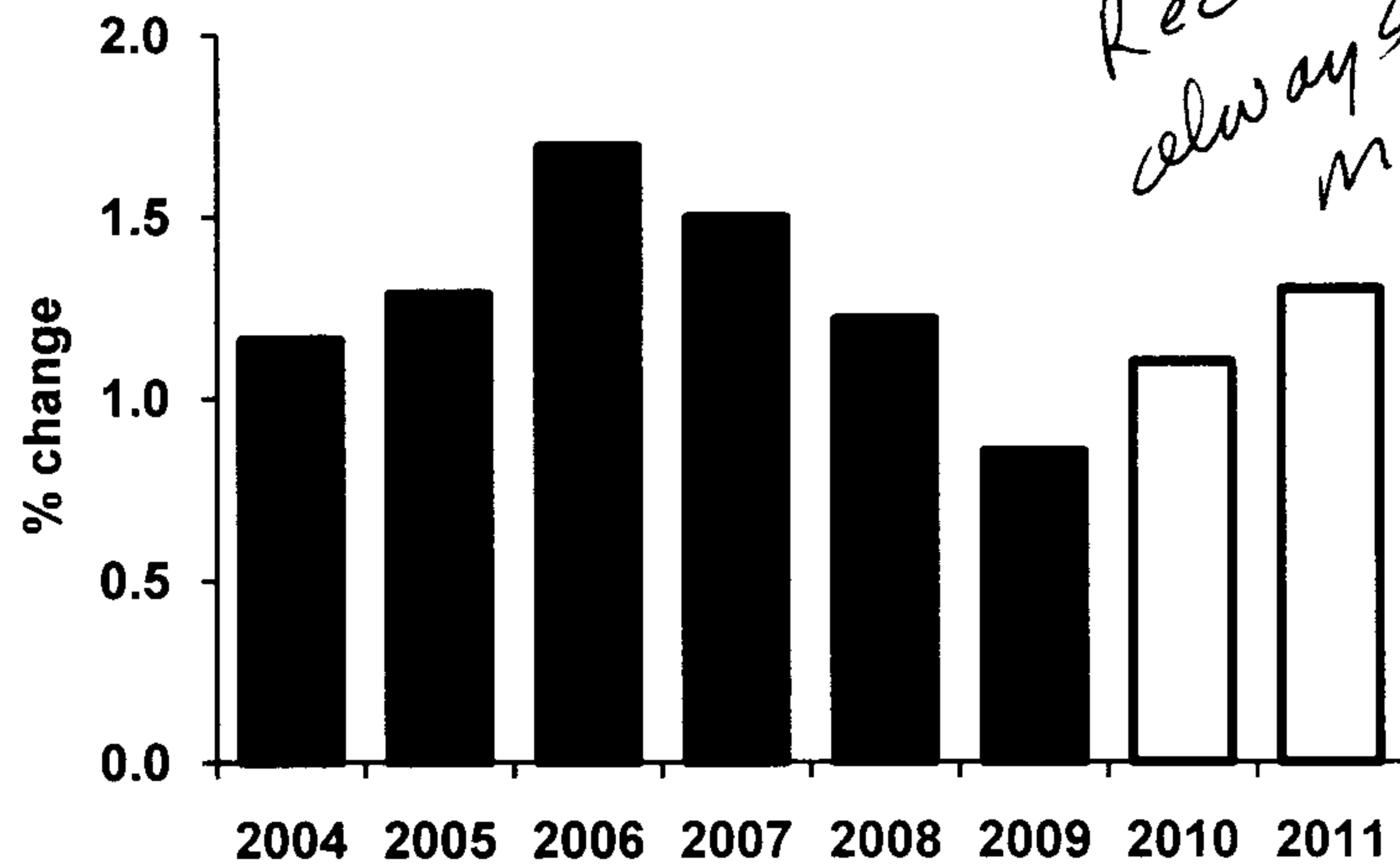
Fed will have to tighten. I think they start in July.

Stock Market



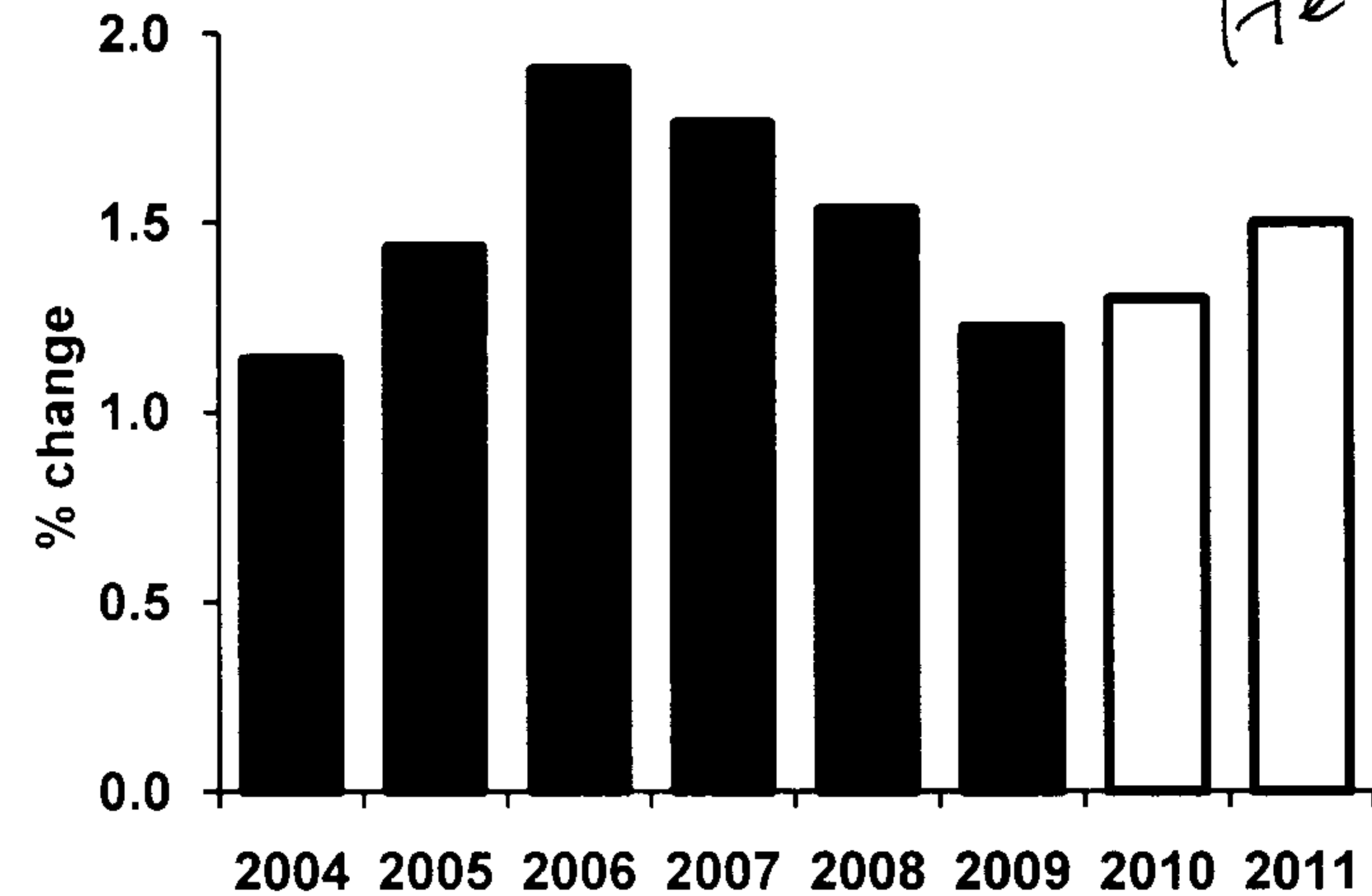
Nice gains, even if we haven't recovered all lost ground.

Oregon Population Growth



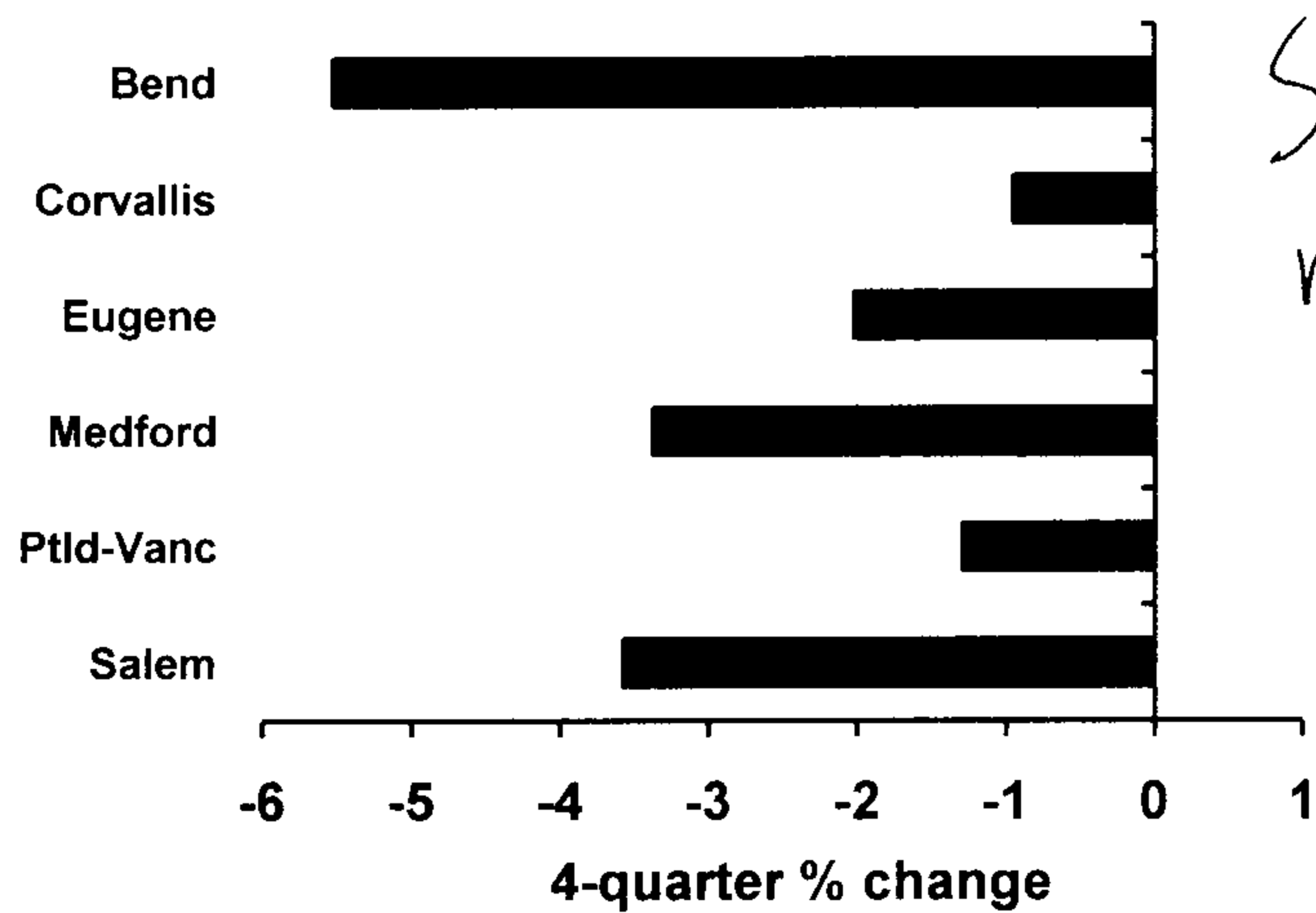
Recessions always slow migration, but look for a rebound.

Washington Population Growth



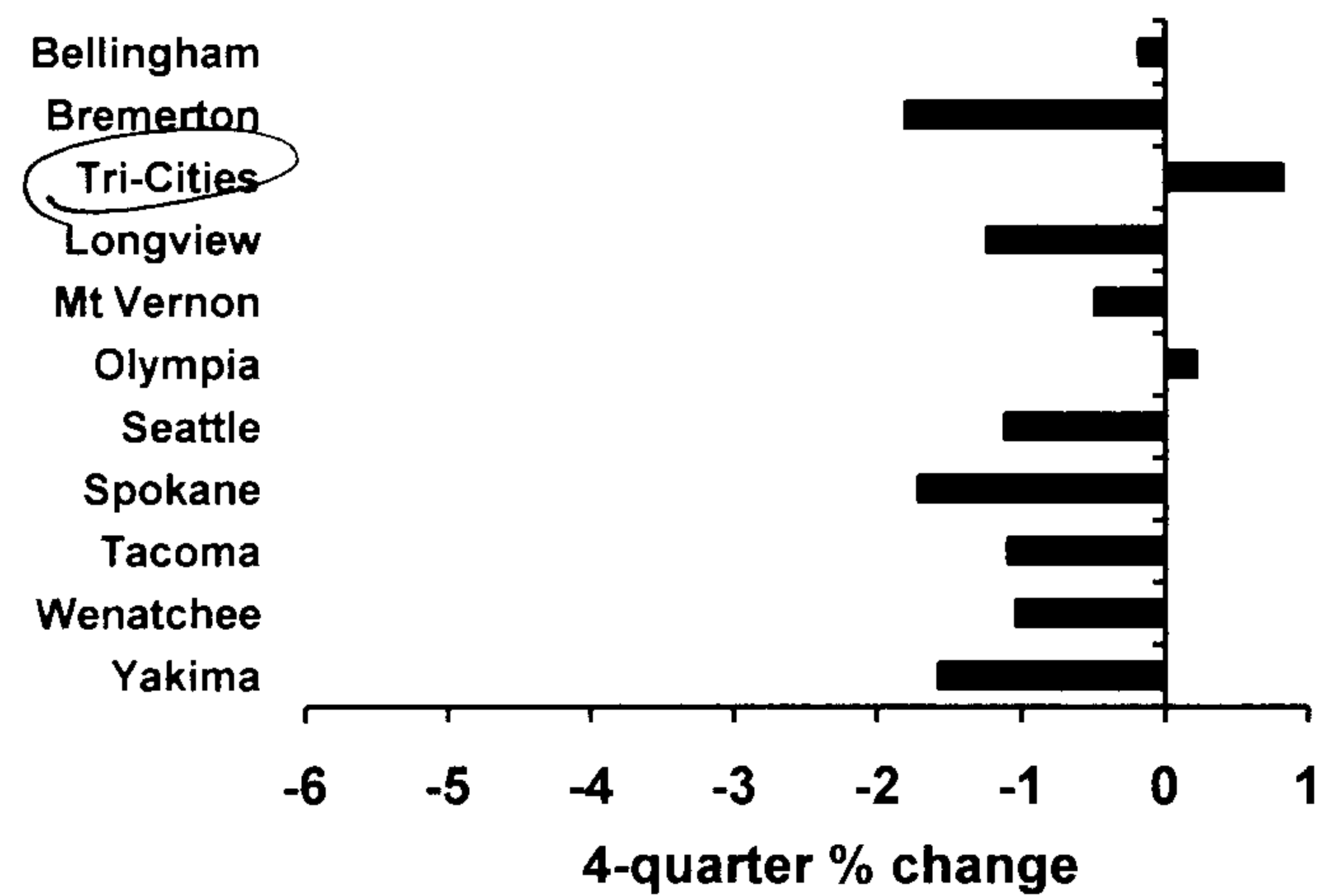
Held up better than most states.

Home Price Loss



Still some major hurt.

Home Price Appreciation



Wow!
U.S. avg -1.2%